

Torque Transducer Type DRN 1/4"-3/4" for static Application



Suitable for:

- testing of torque wrenches
- precisely tightening of screws
- measurement of screwings on badly reachable places
- measurement of the friction factor
- measurement of load on flap valve drives max 2 turns

Special features:

- Measurement range 2Nm – 500Nm
- Accuracy 0,15 % full scale
- Protection IP50
- Adaptable with standardized square drive DIN3121
- Control-input for checking the measurement chain

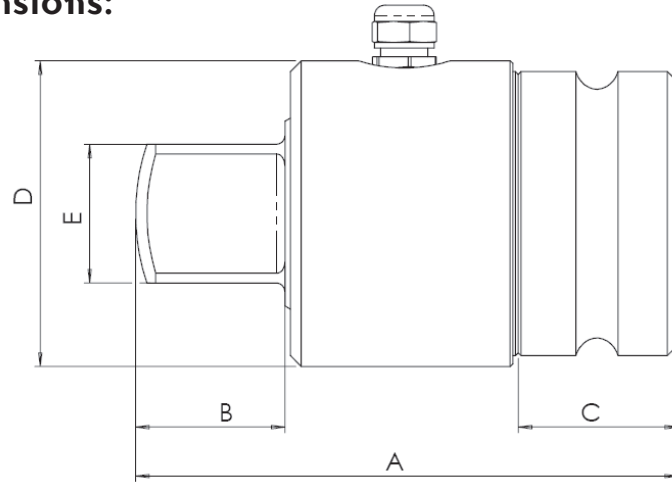
Description:

This non rotating torque transducer is suitable for checking of different types of screwing tools or as a reference transducer in test benches.

This is a reasonable alternative to the rotating torque transducer.

On connecting the supply voltage to a control-input on unloaded transducer a control signal for adjustment of the measurement chain will be created.

Mechanical dimensions:



Type	DRN ¼"	DRN 3/8"	DRN ½"	DRN ¾"
Measurement range: [Nm]	2/5/10/12/15/20	20/30/50/63	100/160/200	200/300/500
Dimensions:	Other measurement ranges on demand			
A [mm]	45	53	65	90
B [mm]	7,2	10,5	15,1	22,6
C [mm]	9,8	12,5	16	24,4
D [mm]	Ø30	Ø35	Ø45	Ø55
E [mm]	6,35	9,525	12,7	19,05
Square drive DIN 3121	¼"	3/8"	½"	¾"
Weight approx.: [g]	60	120	270	640

Technical Data:

Type:	(p)assive	Option (p)assive (s)tandard GMV2	Option (a)ctive (s)tandard GMV2
Supply voltage:	12 V max.	12 V max.	12/24V
Current consumption:	35mA max.	35mA max.	50 mA. max.
Voltage output:	approx. 1mV/V	1mV/V	0 - ± 5V
Nonlinearity:	<0,15 %	<0,15 %	<0,15 %
Hysteresis:	<0,1 %	<0,1 %	<0,1 %
Internal resistance:	350 Ω nominal	350 Ω nominal	---
Compensated temp. range:	5-45°C	5-45°C	5-45°C
Operating temperature:	0-60°C	0-60°C	0-60°C
Temperature fault			
Zero point:	0,02 % / K	0,02 % / K	0,02 % / K
Sensitivity:	0,01 % / K	0,01 % / K	0,01 % / K
Mechanical overload:	40%	40%	40%
Connection:	flying leads	14 pin connector	12pin connector
Protection	IP 50	IP 50	IP 50
cable length	2,5m	2,5m	2,5m

Available accessories: Measurement cable extension, Evaluation devices, Adapter

Ordering example: DRN 500- ¾" p

Torque transducer DRN 500 Nm ; square drive ¾" passive